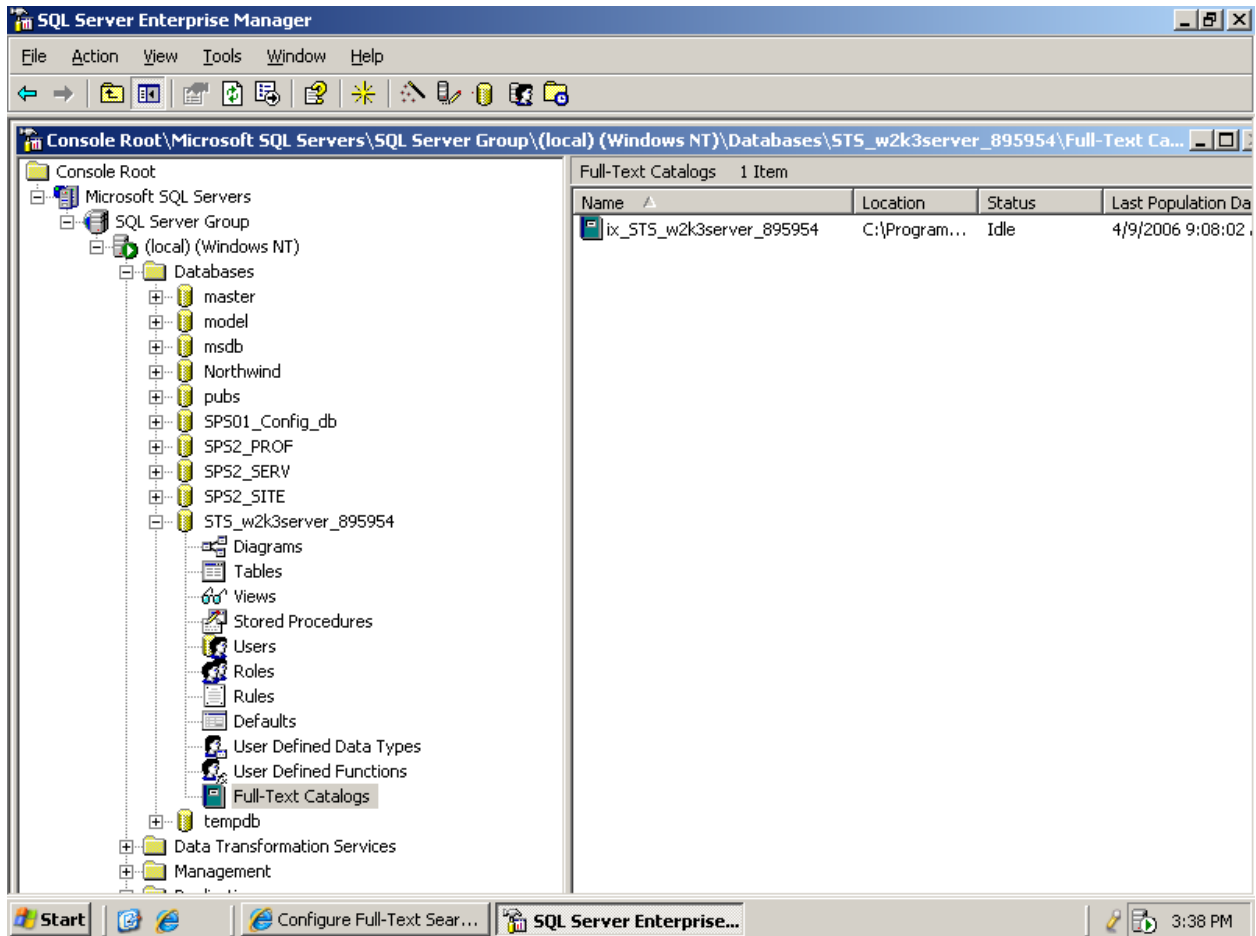


Rebuild the Full Text Index

Windows SharePoint Services V2 relies upon SQL Server Full Text indexes for search support. Sometimes the indexes get corrupt.

The first step is to look at the database and see if a full text index exists for the content database that the WSS virtual server is using. Open up SQL Enterprise Manager, expand the database, and click on the Full-Text catalogs entry as shown below.



Note that on the right hand side there is a full text catalog entry.

The simplest way to rebuild all of the full text indexes is to deactivate the full text search feature in WSS and add it back. Start at SharePoint Central Administration (found in Start-Administrative Tools-SharePoint Central Administration.) It's shown below:



The screenshot shows the Windows SharePoint Services Central Administration interface. At the top, there is a navigation bar with a 'Help' link on the right and a 'Windows SharePoint Services Central Administration' title. Below the title, there is a left-hand navigation pane with a 'Links to related administration home pages' section containing links for 'Windows SharePoint Services' and 'SharePoint Portal Server'. The main content area is divided into three sections: 'Virtual Server Configuration', 'Security Configuration', and 'Server Configuration'. Each section has a brief description and a list of links. The 'Virtual Server Configuration' section includes links for extending or upgrading the virtual server, creating a top-level Web site, deleting a site collection, and configuring virtual server settings. The 'Security Configuration' section includes links for setting the SharePoint administration group, managing site collection owners, managing Web site users, managing blocked file types, and configuring antivirus settings. The 'Server Configuration' section includes a link for configuring default e-mail server settings. At the bottom of the page, there is a status bar showing 'Local intranet' and a zoom level of '100%'.

Windows SharePoint Services
Central Administration

Links to related administration home pages

- Windows SharePoint Services
- SharePoint Portal Server

Use the links on this page to configure virtual server, security, server, and component settings for Windows SharePoint Services.

Virtual Server Configuration

Use these links to install Windows SharePoint Services on a new virtual server, configure settings across all sites on a virtual server, or create a new top-level Web site.

- Extend or upgrade virtual server
- Create a top-level Web site
- Delete site collection
- Configure virtual server settings

Security Configuration

Use these links to update the security options which impact all virtual servers, and to add, update, or change user information for a single top-level Web site.

- Set SharePoint administration group
- Manage site collection owners
- Manage Web site users
- Manage blocked file types
- Configure antivirus settings

Server Configuration

Use these links to set and update server connections including e-mail, databases, and Web servers.

- Configure default e-mail server settings

Local intranet 100%

From here scroll down to the Component Configuration section as shown below:



Use these links to update the security options which impact all virtual servers, and to add, update, or change user information for a single top-level Web site.

- [Set SharePoint administration group](#)
- [Manage site collection owners](#)
- [Manage Web site users](#)
- [Manage blocked file types](#)
- [Configure antivirus settings](#)

Server Configuration



Use these links to set and update server connections including e-mail, databases, and Web servers.

- [Configure default e-mail server settings](#)
- [Manage Web server list](#)
- [Set default content database server](#)
- [Set configuration database server](#)
- [Configure HTML Viewer](#)
- [Configure virtual server for central administration](#)

Component Configuration

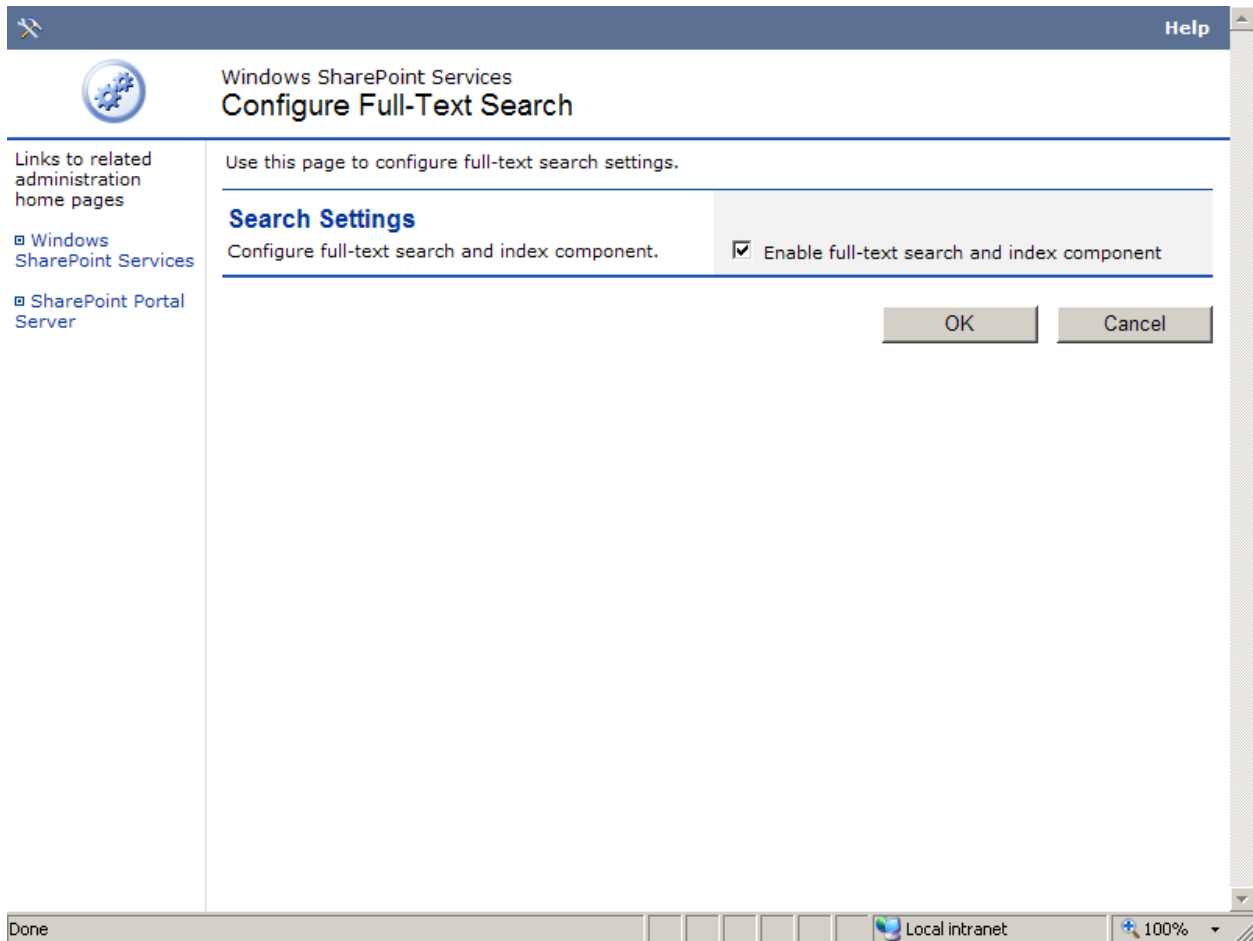


Use these links to manage components that work across all virtual servers, including search, usage analysis, and quotas.

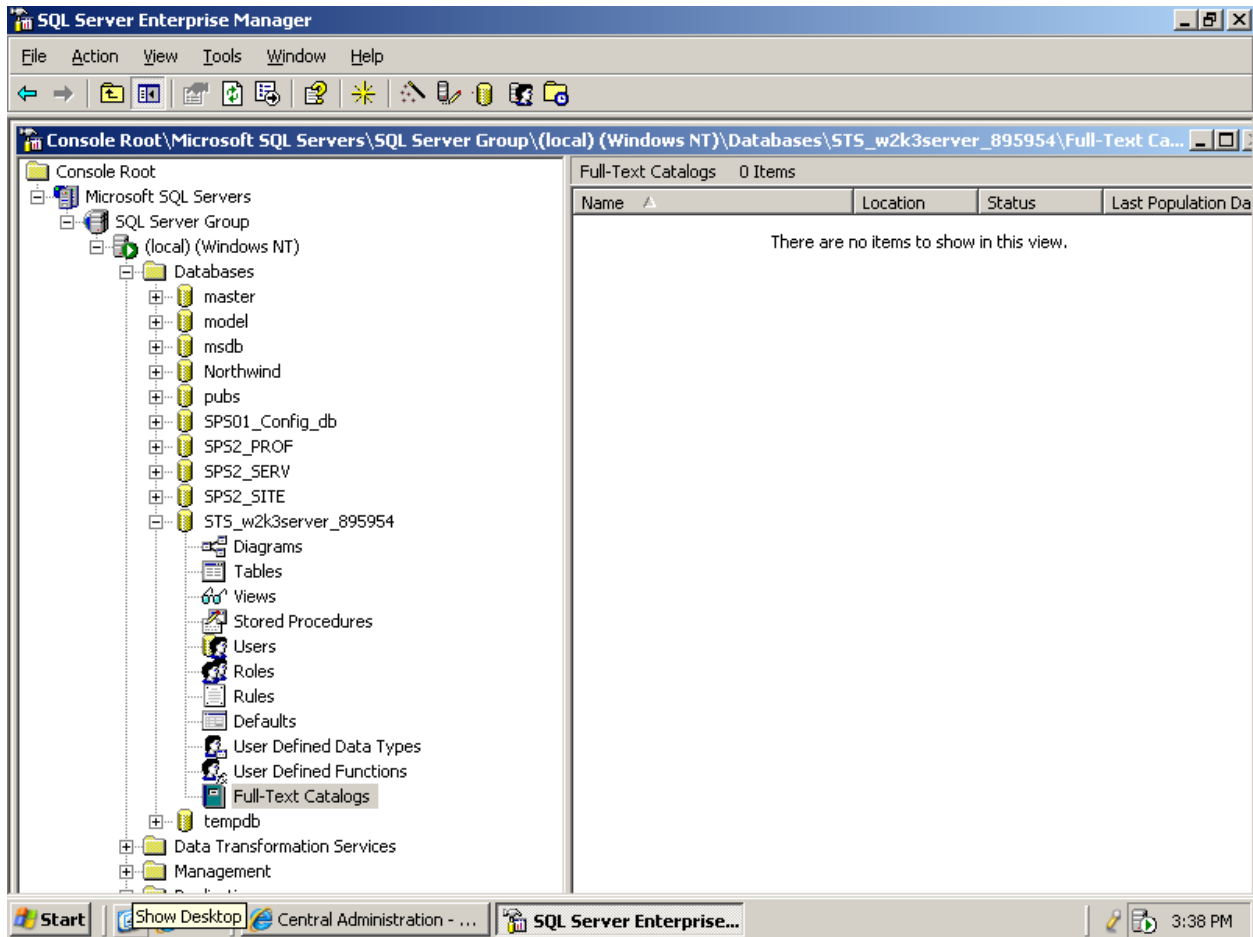
- [Configure full-text search](#)
- [Configure usage analysis processing](#)
- [Manage quotas and locks](#)
- [Configure data retrieval service settings](#)



Click the [Configure Full-text search](#) link in the Component Configuration section. The Configure Full Text Search page as shown next will be displayed:



Uncheck the *Enable full-text search and index component* and click the OK button. This will disable the full text search. If you refresh your SQL Enterprise Manager view you should see that the full text index has disappeared as shown next:



To re-enable the search from Central Administration page, reselect the Configure Full-Text Search link, recheck the *Enable full text search and index component* and click the OK button again. If you refresh SQL Enterprise Manager again you should see the index again.